

We have chosen:

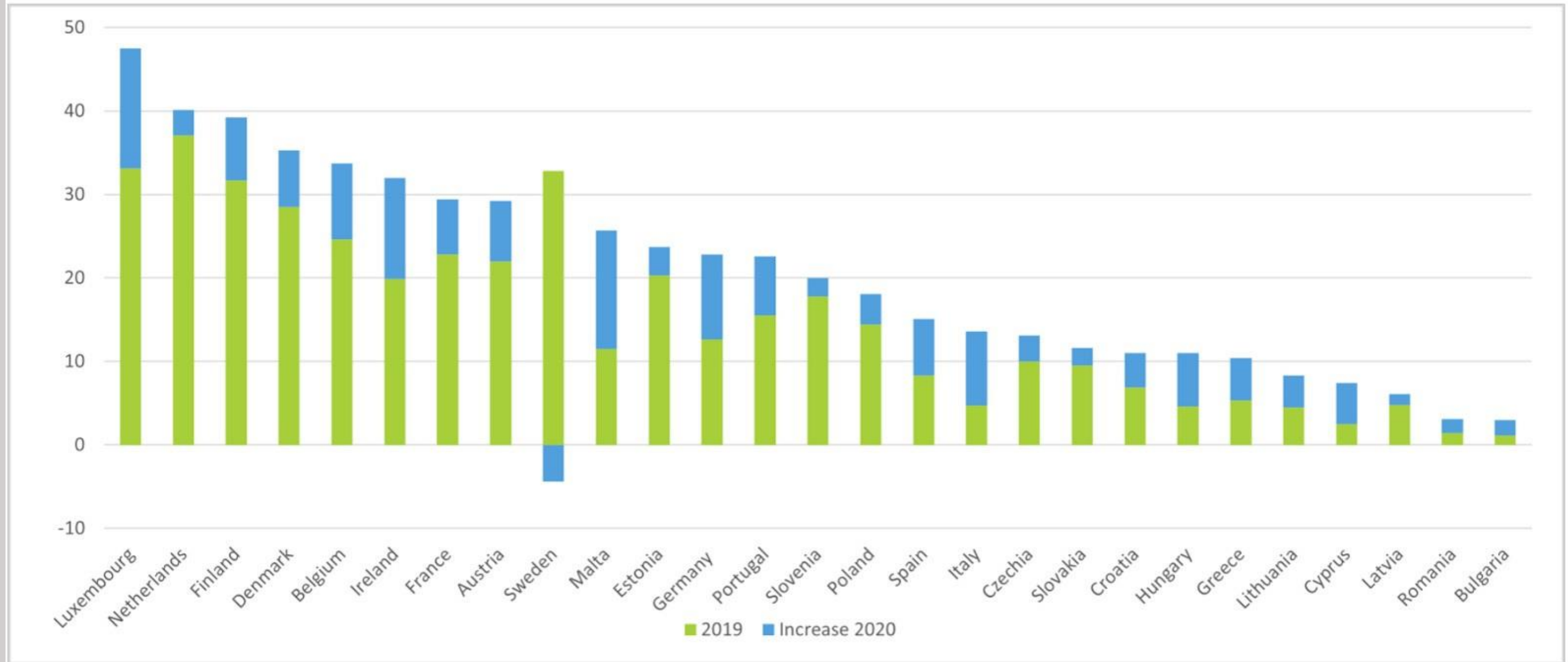
**Choice 1 – Modular and
Adaptive smart furniture**



But with a twist:

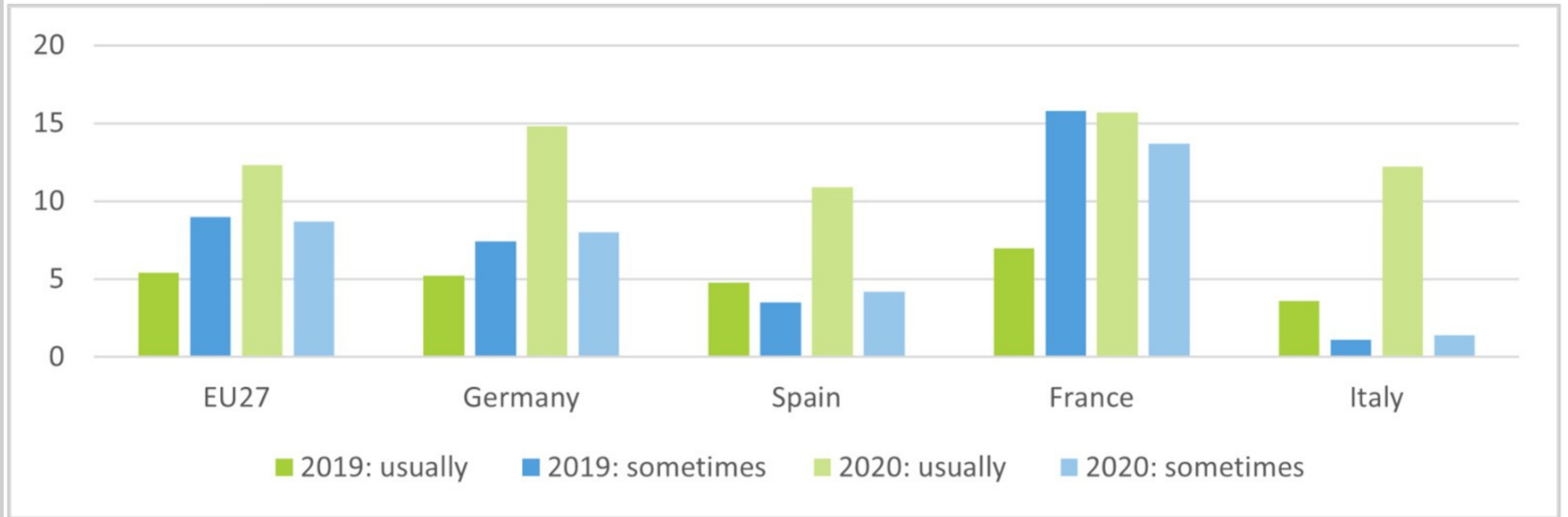
The Shifting Nature of Work

Figure 1: Percentage of workers working from home in 2020, distinguishing between 2019 and the increase during 2020, Member States



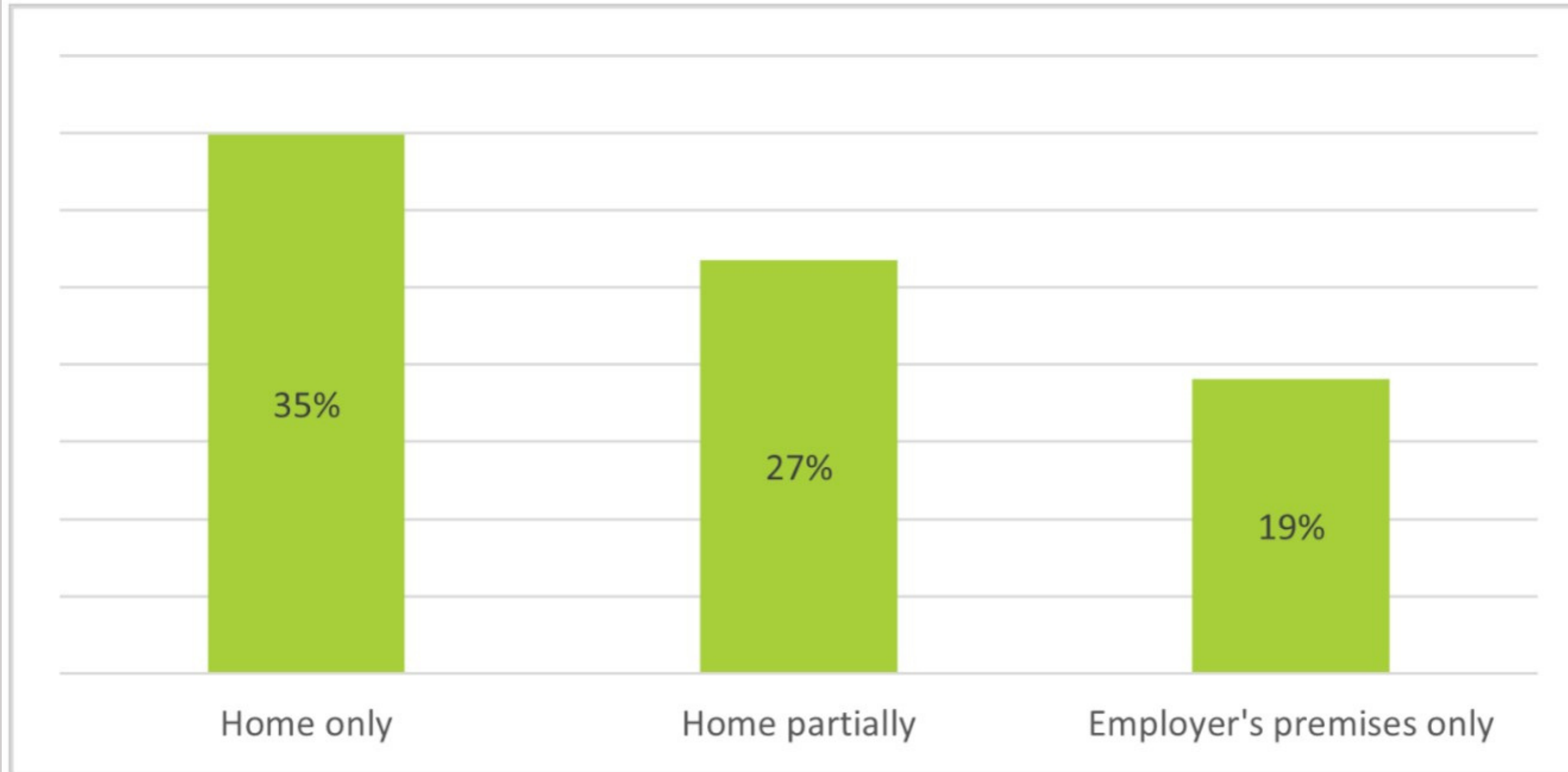
The Shifting Nature of Work

Figure 2: Percentage of workers working from home, either usually or sometimes, in the EU27, Germany, Spain, France and Italy, 2019 and 2020



The Shifting Nature of Work

Figure 3: Percentage of employees working between 41 and 60 hours a week, by place of work, EU27, March 2021



Source: Eurofound, *Living, working and COVID-19 e-survey, round 3*

A person is sitting on the floor, leaning back on their hands. They are wearing a light-colored long-sleeved shirt and dark pants. To their left is an open laptop with a white keyboard. In the background, there is a large potted plant with many green leaves. The entire scene is dimly lit, with a dark, semi-transparent overlay covering the image.

**Are current solutions hitting the mark
or falling short?**

Belgium:
Right to disconnect

UK:
4-day work week

Tech trends:
**Samsung Wellbeing,
Freedom, even the
Pomodoro technique**

A scenic view of Mount Fuji, a large snow-capped mountain, with cherry blossoms in the foreground. The image is overlaid with a grid pattern.

“Karoshi”

A dark, moody photograph of a laptop keyboard. The keyboard is the central focus, with its keys visible in the lower half of the frame. The background is a dark, out-of-focus surface, possibly a desk or a wall, with some faint, blurry shapes that could be other objects or reflections. The overall lighting is very low, creating a somber and mysterious atmosphere. The text 'Our Radical Stance...' is overlaid in the center of the image in a bold, white, sans-serif font.

Our Radical Stance...



The Group 1 Anti-Work Company

Get to Work Friends

From Flach, Hofer, Hugar, and Kolosovskaia



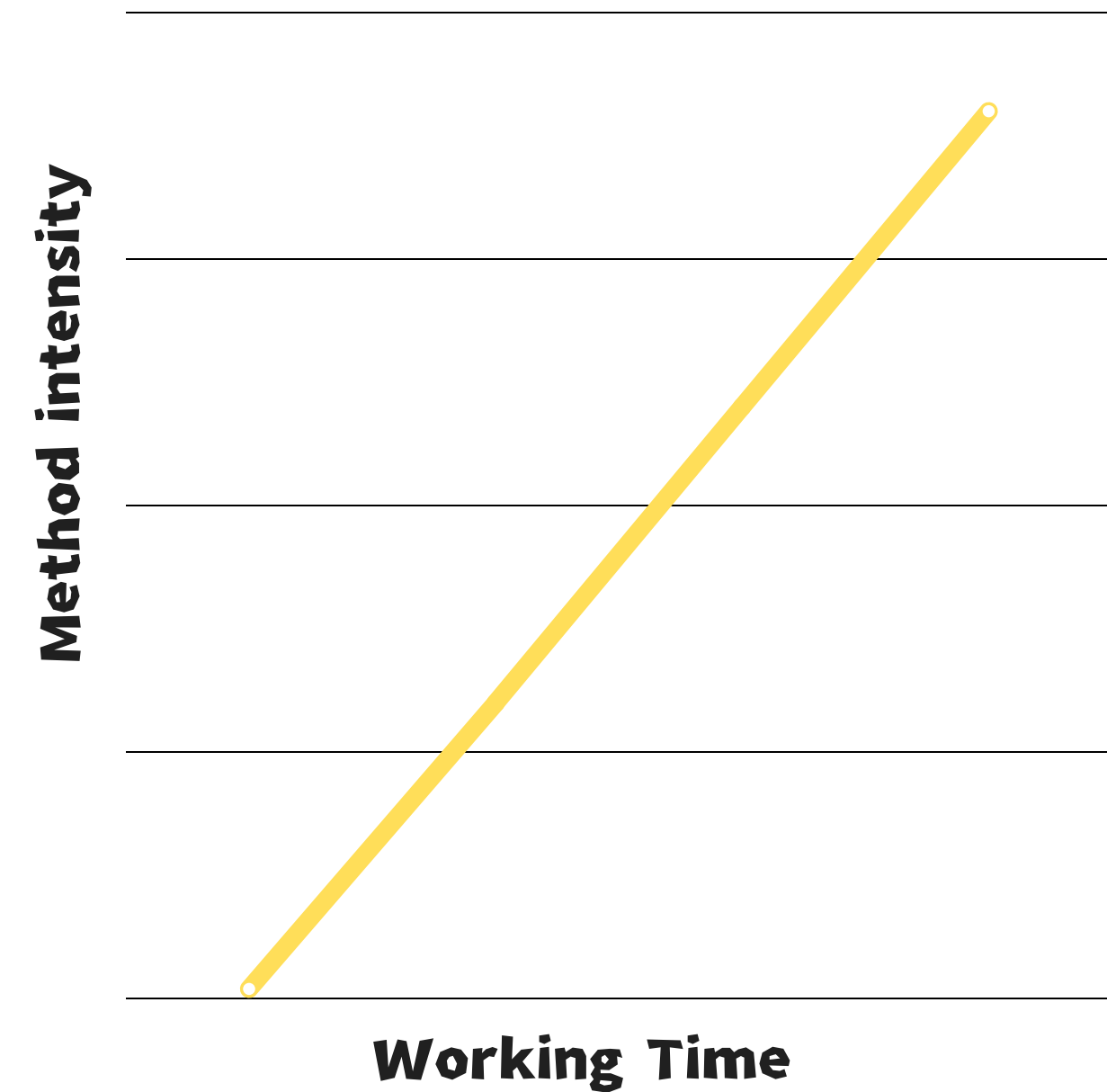
...For social coercion.

Hostile architecture...



Our Model

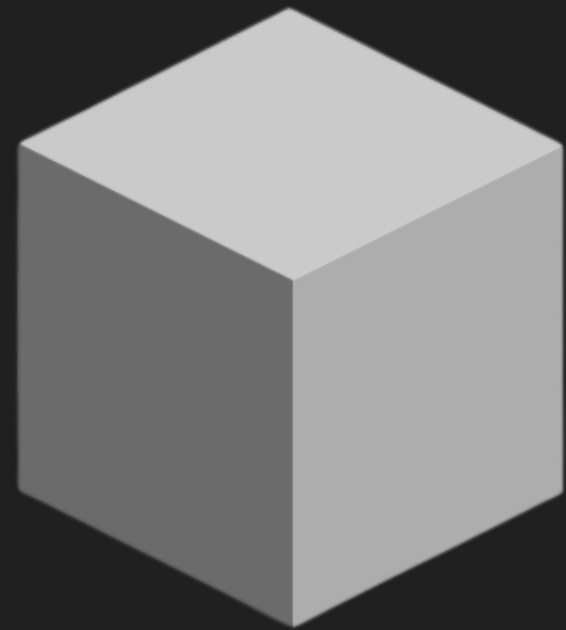
- **Central home office hub device**
- **Tiered system based on how much time you've worked**
- **Notifications as prompts**
- **Multi-sensory methods**





So what is the technology?

In brief...



Cube controller

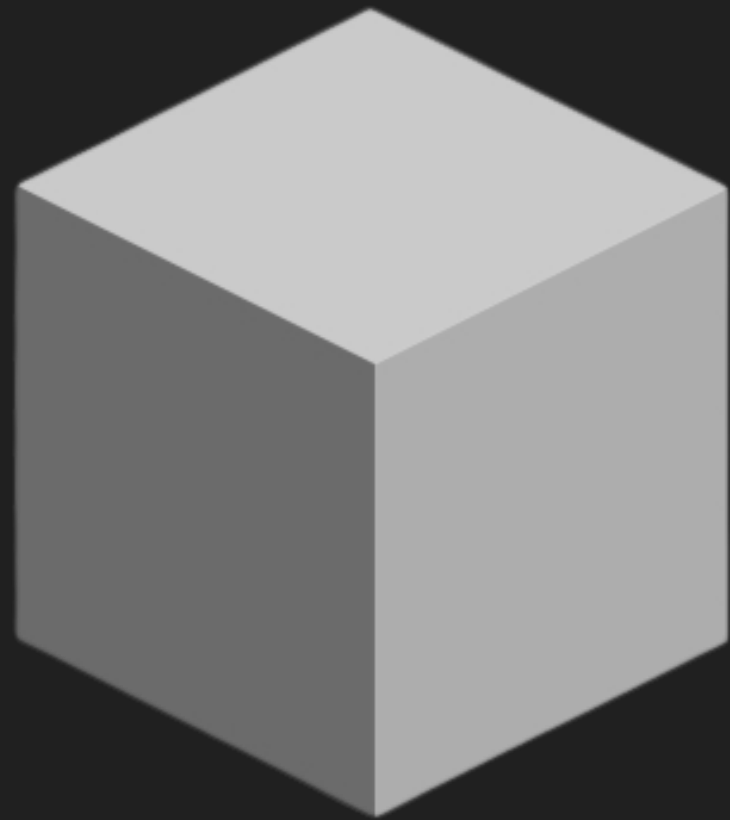


Connection



Used technologies

I. CUBE



The user

- **installs the cube**
- **defines the work-duration;**

The cube

- **further controls the whole environment!**

II. Connection



The cube is compatible with

- **already-existing home technology**
- **other torture gadgets**
- **furniture from *GetOFFice*'s premium anti-work collection**

III. Tiered system

Code:

**Blue,
Green,
Grey,
& Red**



**4 Tiers in
total, each
more daunting
than the last!**

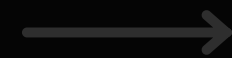


III. Tiered system

Emergency Stop button?

Code:

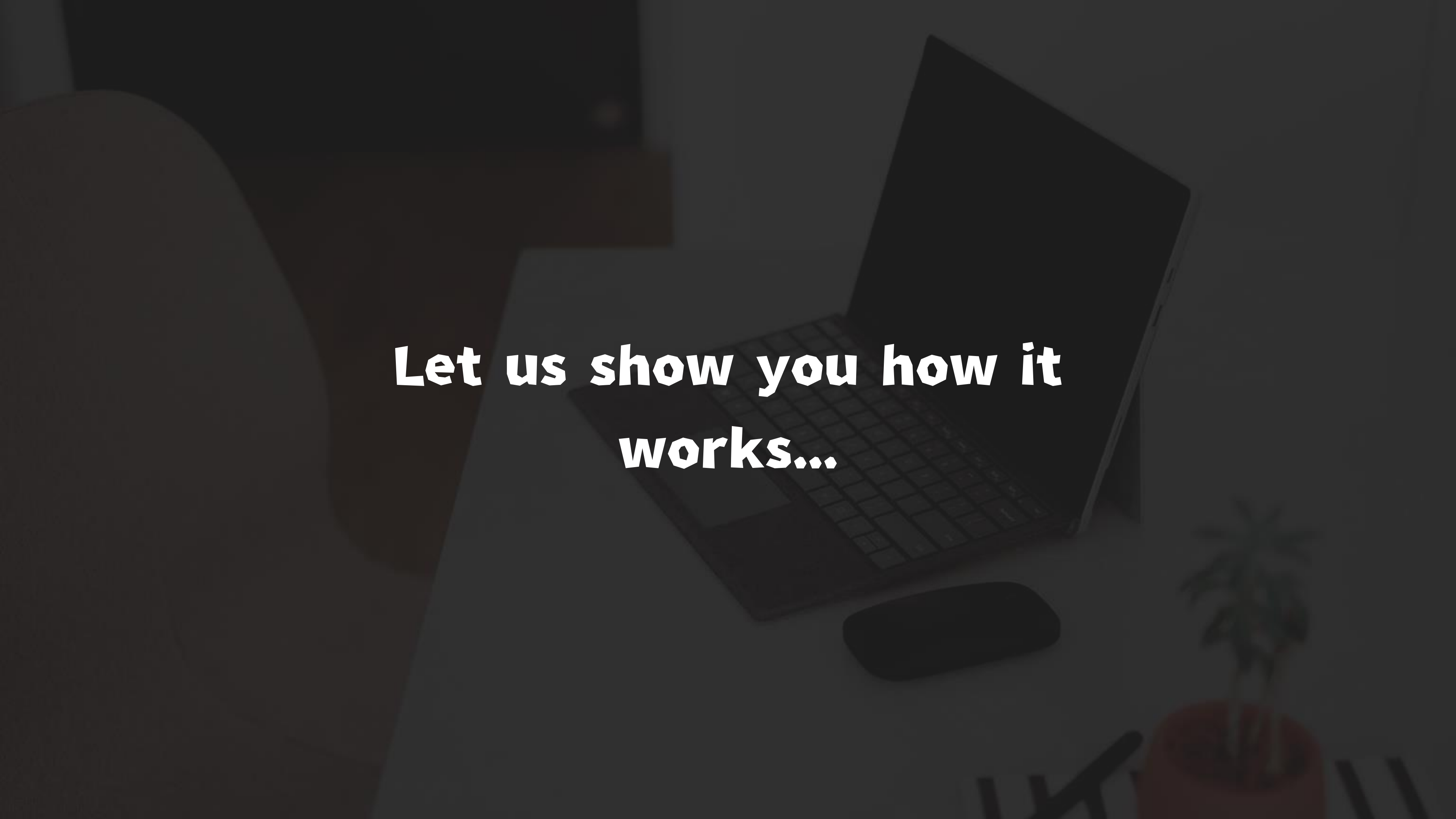
Blue,
Green,
Grey,
& Red



4 Tiers in
total, each
more daunting
than the last!



...we're
sorry.

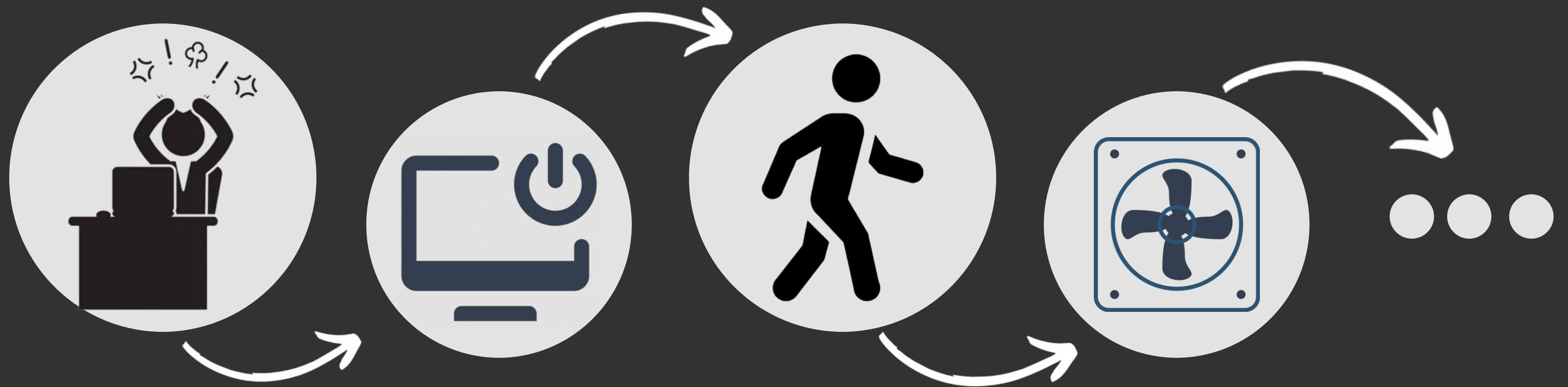
A dark, dimly lit desk with a laptop, mouse, and a small plant. The laptop is open and positioned in the center-right of the frame. A mouse is visible in the foreground, and a small potted plant is on the right side. The overall scene is very dark, with the text providing the main focus.

**Let us show you how it
works...**

Get OFFice



Outcome



A dark, moody photograph of a desk setup. In the center, a laptop is open, with a mouse to its right. In the bottom right corner, there is a red cup. A large, semi-transparent white arrow points from the left side of the frame towards the center, where the text is located. The overall lighting is low, creating a professional and focused atmosphere.

**But the cube can do much
more...**



Flammable materials



Explosion risk



Toxic



Corrosive



Danger overhead cranes



Fork lift trucks



High voltage

Who has the choice,



General Warning



Laser Radiation



Biohazard



Oxidising



Hot surface



Danger of entrapment



Danger of death

has the agony



Irritant



Slippery floor



Watch your step



Cutting



High temperatures

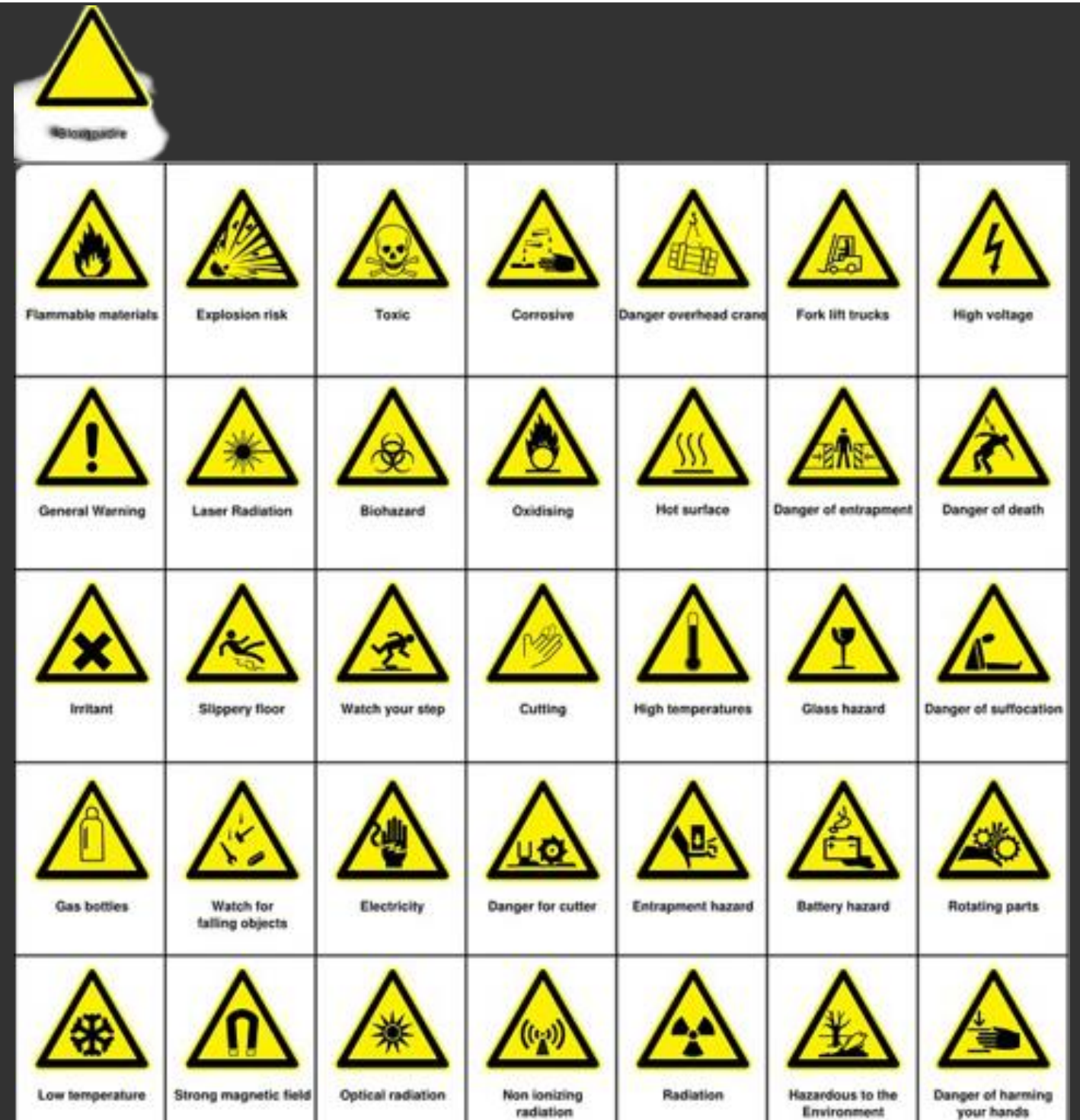


Glass hazard



Danger of suffocation

- You choose your own poison
- You decide when it stops
- You don't interact with the cube, the cube interacts with you



...proposed Interactions...

Nr. 1: Parental Control

**Your children get
the control over
your office.
Literally!**



Don't they look happy ? :)



Nr. 2: Shock Therapy

Inspired by Electroshock Therapy

**(and popular demand of one
lecturer *cough*)**

**the cube will “gently”
shock you.**

Shocking revelation, right ;)

Nr. 3: Meetings End Early

People can't get to the point? Now you at least no longer have to listen to them!



Actually increases productivity?



Conspiracy theory who?!

Nr. 4: Uncle Tom

The holidays and family gatherings are not enough to talk with uncle Tom about his ideas and listen to his opinions on EVERYTHING?

Oh boy, do we have something for you!

To conclude, methods are randomized, it is always a surprise

Physical



Psychological



Peer Pressure



Taste



Sight



Material



Smell



Digital



Sound





Innovative Aspect

Comparison

- **GetOFFice is connected directly to the computer**
- **Cube controls the whole environment in the room**
- **“NO” to prolonging the working time**
- **New implementation of “unpleasant design”**

Future

- **More methods!**
- **Mobile version**

Thank you!